

Lincoln Mark VII Overhead Console

V200709162047

Our Lincoln Mark VII's come equipped with a standard Finish Panel (overhead console). This console will have at least a bank of warning indicators such as CHECK SUSPENSION, HEAD LAMP OUT, REAR LAMP OUT, CHECK (ANTI LOCK) BRAKES. Originally, the compass and outside temperature displays were optional equipment. The "little trap door in the middle" is for the stock, Lincoln Garage Door Opener.



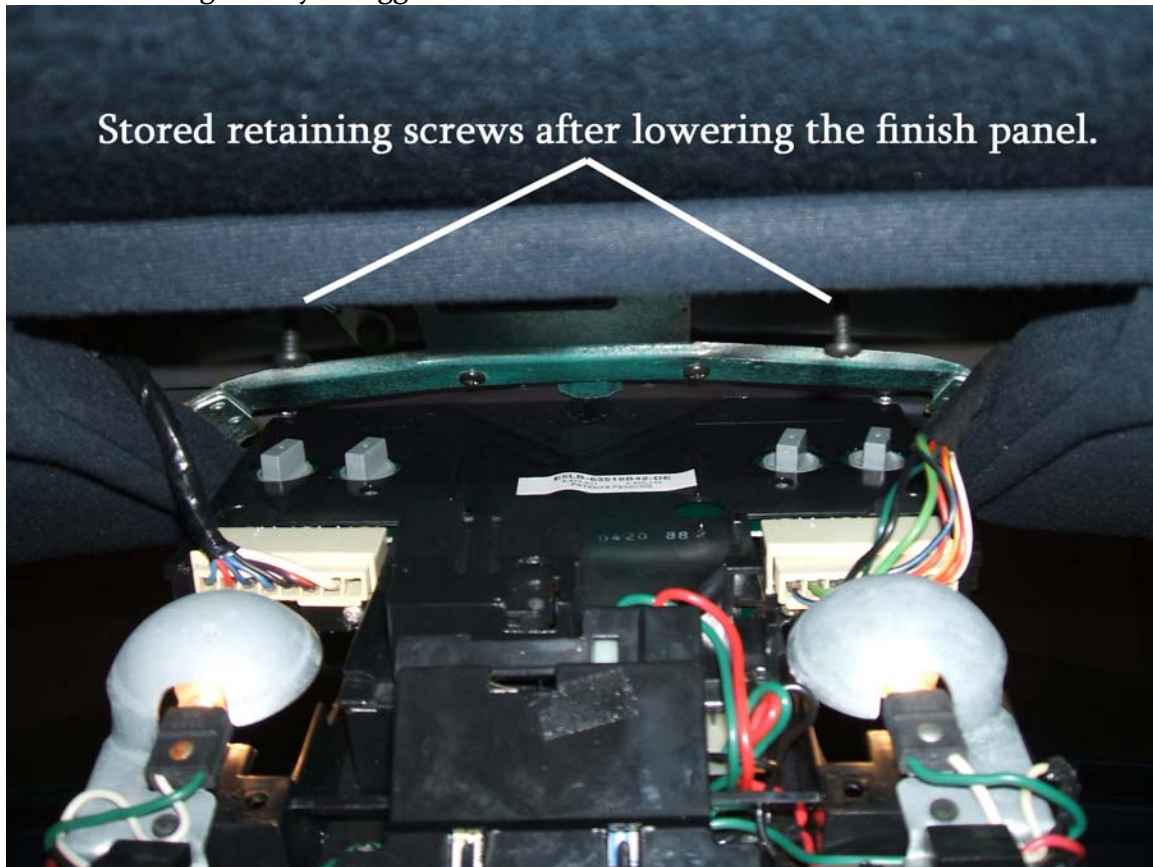
Insert a small blade screwdriver in the slot at the rear of one of the reading lamp assemblies. This slot will only be 3 to 5 millimeters deep. Push screwdriver rearward and pull down on lens. Remove LH and RH lens assemblies.



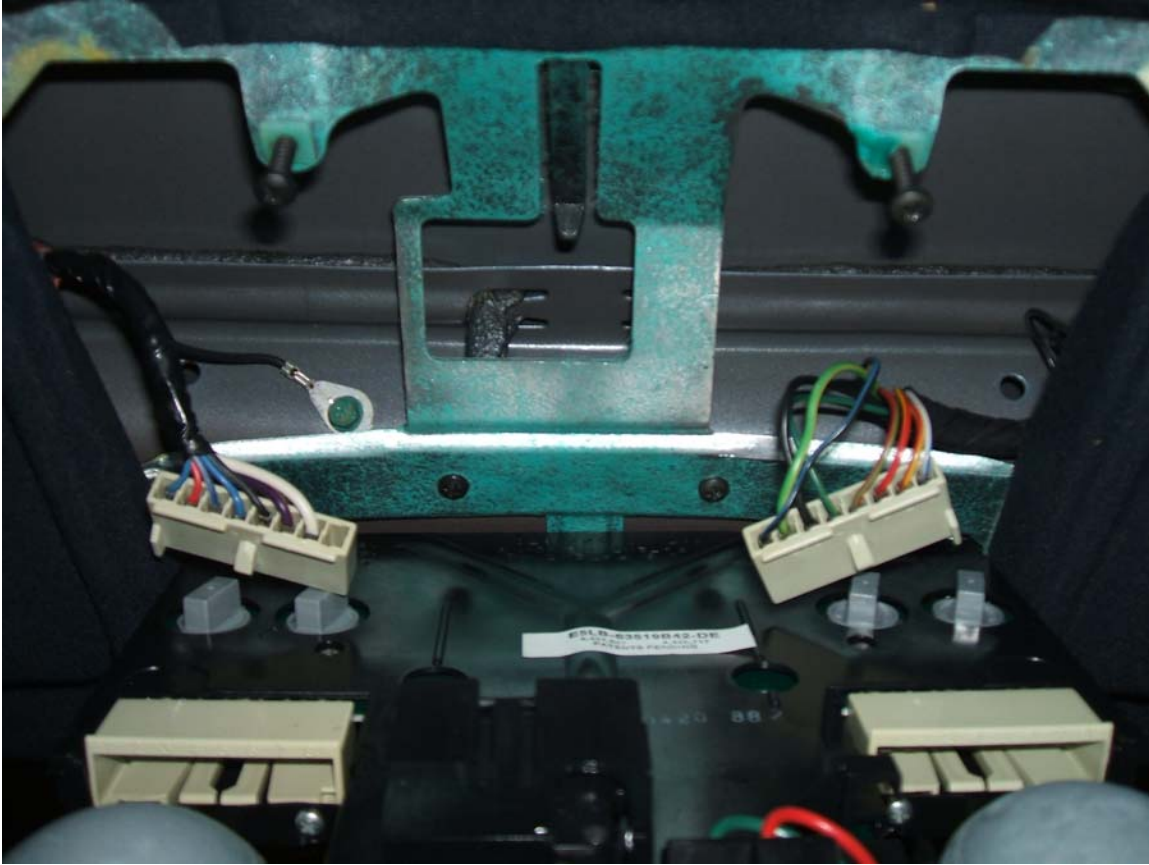
Remove two center finish panel retaining screws.



Pull finish panel down and disconnect all electrical connectors. My map lamp bulbs were hot enough to fry an egg so DON'T TOUCH EM!



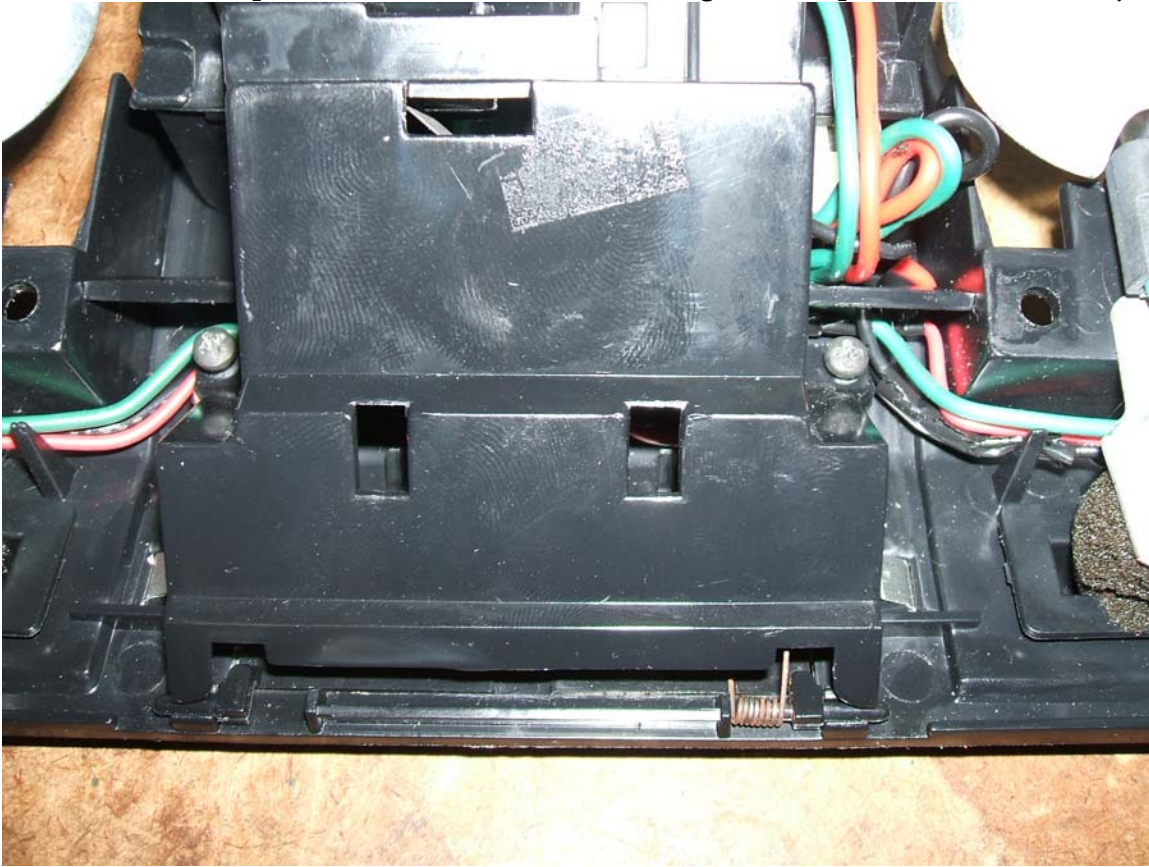
Above the left hand connector, you can see one of our THIRTEEN ground wire locations.



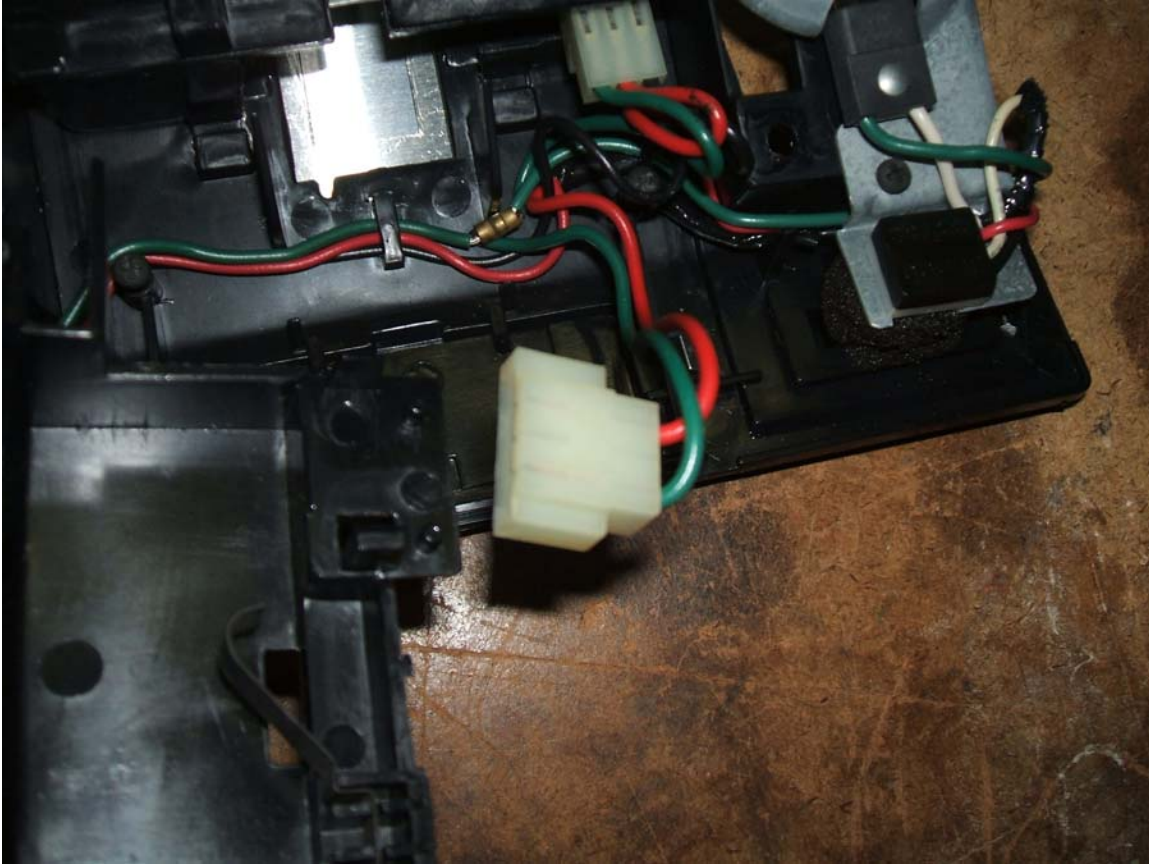
The 921 map light lamps should not be touched with bare hands. The oil in our skin can cook on the surface of this lamp and cause it to shatter. These lamps pull straight out forward.



Remove two Phillips screws on the sides of the Garage Door Opener cradle assembly.



Twist out power supply for Garage Door Opener Cradle.



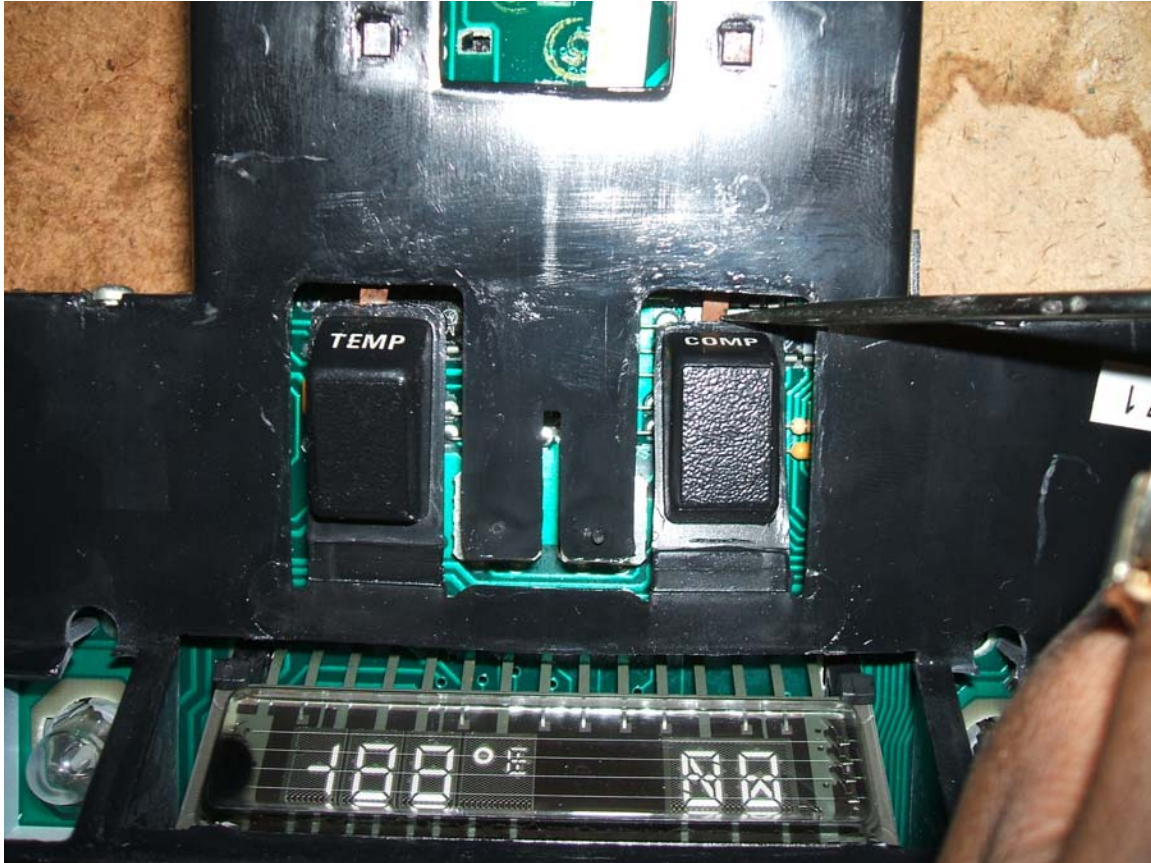
Remove two center screws holding the electronic module to the finish panel.
Removing the module will give you access to the moon roof switch (optional).



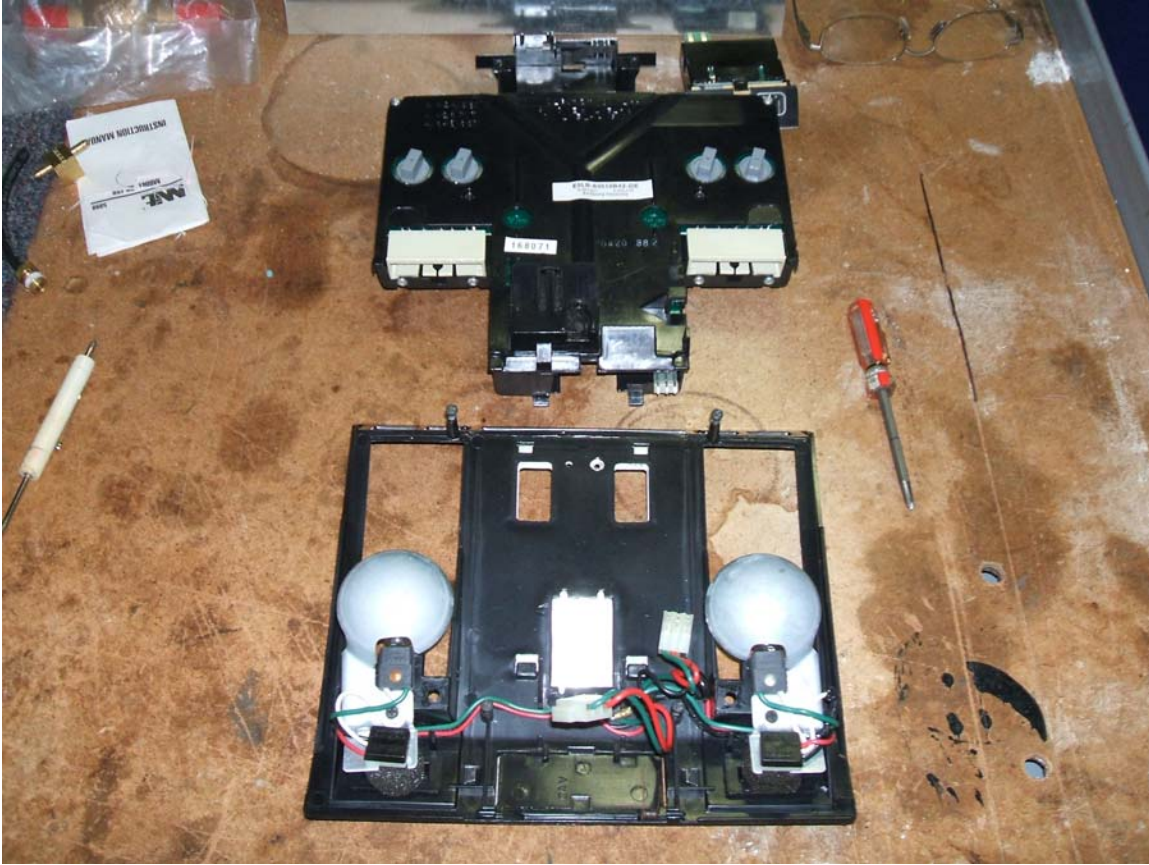
The four overhead console warning lamps can be replaced by removing the lamp with integrated socket, by turning them counter clockwise 1/8 turn.



The Outside Temperature and Compass moment switches may sometimes get caught inside of the overhead console assembly. The switches are loaded with a steel spring. The spring can be separated from the switch with a small blade screwdriver, releasing it back into normal operation.



Completely disassembled, the unit looks like this.



Reassembly is in the reverse.

